



**unine**<sup>o</sup>  
Université de Neuchâtel  
Faculté des sciences  
économiques

**Hes·so**  
Haute Ecole Spécialisée  
de Suisse occidentale  
Fachhochschule Westschweiz  
University of Applied Sciences and Arts  
Western Switzerland

swissuniversities

Transdisciplinary Institute of Social Work (ITTS)

# INFORMATION SESSION : PHD PROGRAMME IN SOCIAL WORK

Thursday November 30, 12h00-14h00

**Barbara Waldis, Director and Professor ITTS, Faculty of Economics and Business**

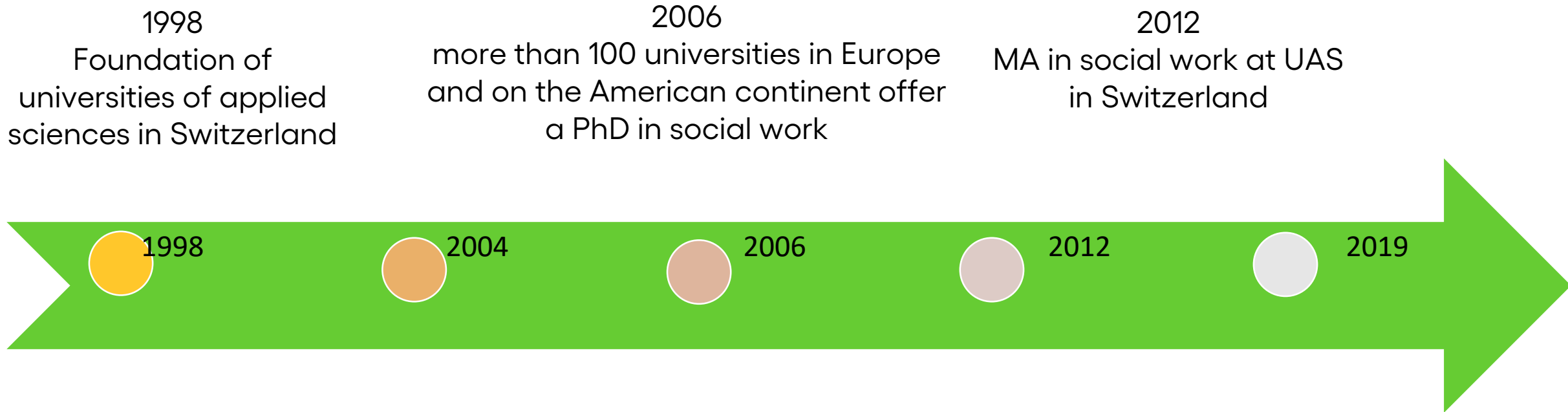


# Table of content

- What about the creation process of ITTS?
- What are the goals of ITTS?
- What is specific about ITTS?
- Who are the PhD students of ITTS?
- Who is part of the team of ITTS?
- What are the most important building blocks at ITTS?
- How does ITTS consider the discipline of social work?
- Why do you need a PhD in social work?
- What is specific about the PhD in social work at the ITTS?
- How to find two PhD codirectors?
- How to plan and to finance a PhD?
- How does the PhD process at the ITTS work?
- How is the PhD programme structured?
- What seminars / classes does the ITTS offer?
- How about other doctoral seminars / conferences at the ITTS?
- What conditions exist for registration as PhD student at the ITTS?
- What is in an application as PhD student at UNINE?

# Creation process of the ITTS I: International Academic Context

---



1998  
Foundation of  
universities of applied  
sciences in Switzerland

2006  
more than 100 universities in Europe  
and on the American continent offer  
a PhD in social work

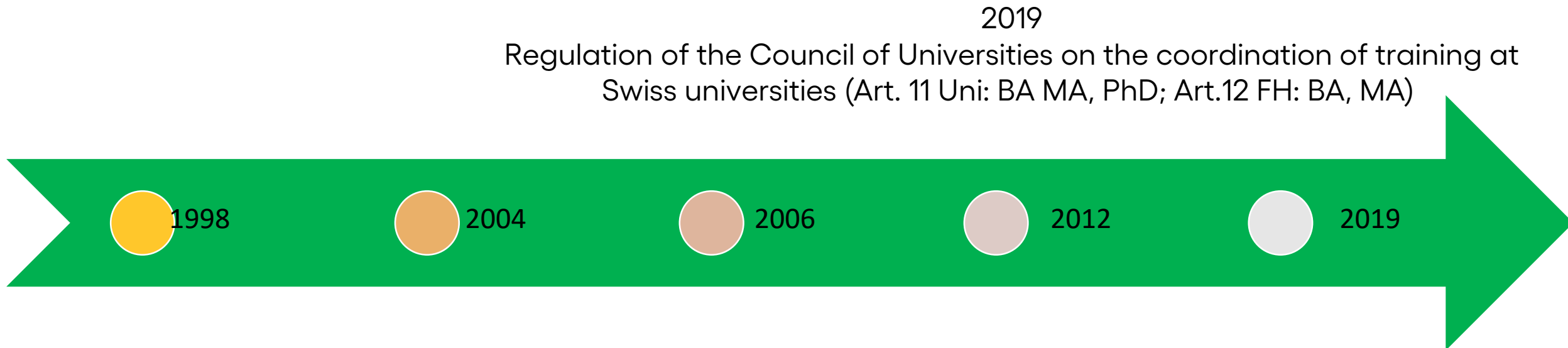
2012  
MA in social work at UAS  
in Switzerland

2004  
Schools of social work as  
universities of applied sciences (BA)

PhD in social work in USA, Canada, UK, Portugal,  
Germany, Lebanon, Australia, China and Sweden

# Creation process of the ITTS II: Legal Base

---



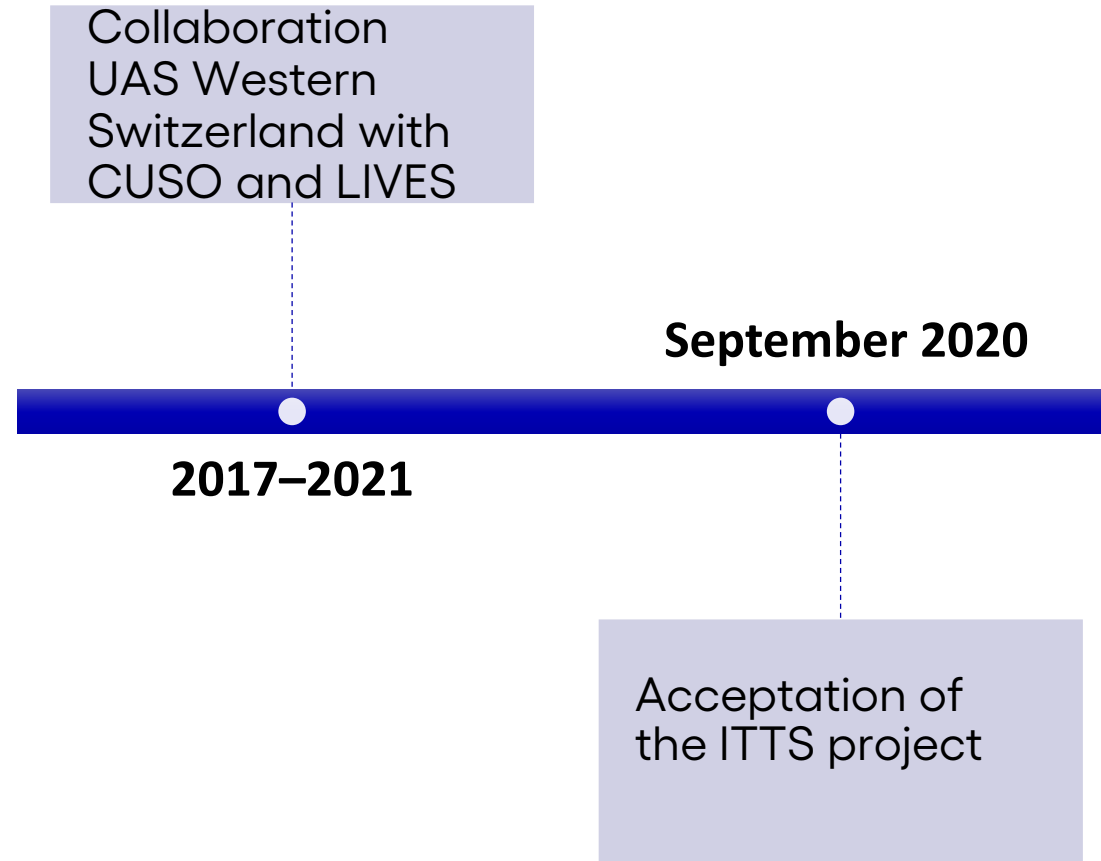
**Art. 4,2 : For the third cycle, universities and other academic institutions in the university sector offer universities of applied sciences and universities of teacher education opportunities for cooperation in a spirit of partnership.**

<https://www.fedlex.admin.ch/eli/cc/2019/722/fr> ; <https://www.fedlex.admin.ch/eli/cc/2019/722/de>

# What are the goals of the ITTS ?

## Goals of the ITTS

- Institute for the PhD in Social Work
- Promotion of younger generation for social work training in the 3rd cycle
- Capability of examination of practice on the bases of theoretical foundations
- Contribution to the development of new knowledge by scientific studies in social work



# What is specific about the ITTS?



First institute specifically and exclusively for the PhD in social work in Switzerland

**Hes**·so

A collaboration of the School of social work of the UAS Western Switzerland and the University of Neuchâtel, PhD title will bear the mention "in partnership with the HES-SO"



Hosted by the Faculty of Economics and Business



It adopts a transdisciplinary perspective as PhD thesis are codirected by a social work professor of an UAS and by a professor of the university of Neuchâtel



It allows holders of a MA in social work of a university of applied sciences (UAS) or a Master's degree in social sciences, law or economics direct access to a PhD in social work

# Who is part of the team of the ITTS



**Florence Manzoni**  
Administrative Collaborator  
[florence.manzoni@unine.ch](mailto:florence.manzoni@unine.ch)



**Marta Marques Castanheira**  
PhD Student, Assistant (50%)  
[marta.marques@unine.ch](mailto:marta.marques@unine.ch)



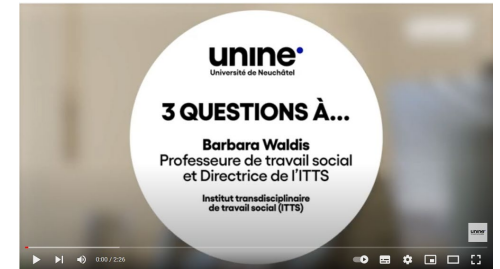
**Ophélie Bidet**  
Scientific Collaborator (50%)  
[ophelie.bidet@unine.ch](mailto:ophelie.bidet@unine.ch)



**Barbara Waldis**  
Professor (50%), Director  
[barbara.waldis@unine.ch](mailto:barbara.waldis@unine.ch)



**In August 2024  
Professor (50%) will join**



<https://www.youtube.com/watch?v=hrrnLkWTt0p0>



<https://www.youtube.com/watch?v=7Kazr4ElohQ>



# Who are the PhD students FS 2022/2023?





- Marta Marques Castanheira, ***Social inequality and professional perspectives for first generation migrant youth*** (sociology/anthropology, HETSGE/ ITTS, Milena Chimienti, Barbara Waldis)
- Katharina Eiler, ***Best practices of managing social institutions – perspectives of employees*** (social work/management, BFH/ IMN, Oliver Humbelin, Cinzia dal Zotto)
- Melanie Germann, ***Best practices of managing social institutions – perspectives of employers*** (social work / management FHNW/IMN, Peter Zängli, Cinzia Dal Zotto)
- Raquel Ricciardi, ***Socioecological responsibilities in big companies, community and workers' participation*** (political economy/anthropology, SUPSI/FLSH IE, Nicolas Pons-Vignon, Ellen Hertz)
- Albulene Ukshini, ***Death and mourning in the transnational space between Kosovo and Switzerland*** (social work / anthropology HETSL / ITTS, Marc-Antoine Berthod, Barbara Waldis)
- Lorry Bruttin, ***Ageing and diversity: no retirement for farmer – a new field for social work*** (social work / anthropology HES-SO VS/ HETSL/IE, Caroline Henchoz, Jérémie Forney)
- Daniele Bigoni, ***Male homosexuality in penal institutions and the role of social work*** (social work / sociology FHNW/ MAPS, Daniel Gredig, Philip Balsiger)
- Romain Descloux, ***The place of youth regarding socio-professional integration in social and transitional integration measures*** (social work / psychology of education HETSL/ MAPS, Stéphane Rullac, Laure Kloetzer)
- Jeremias Amstutz, ***Processes and forms of self-organized associations and institutions*** (social work / management FHNW/IMN, Peter Zängli, Emmanuelle Reuter)



# Who are the PhD students FS 2023/2024



Nicole Eicher, **Child protection during covid-19**, psychology / anthropology, David Laetsch, ZHAW / Barbara Waldis, UniNE

Damaris Fischer, **Disability studies, inclusion, labor market**, social work / innovative management, Tobias Fritschi BFH / Emmanuelle Reuter, UniNE

Simon Roth, **Artificial intelligence and social work**, social work / information technology, Daniel Gredig, FHNW / Christos Dimitrakakis, UniNE

Rulla Sutter, **NGO, poverty, covid-19 in Switzerland**, social sciences / anthropology, Oliver Hümbelin BFH / Barbara Waldis UniNE

Carolina Toletti, **Othering, migration and professional training**, social work / anthropology, Maritza Le Breton, FHNW / Barbara Waldis, UniNE



# Which are the most important building blocks at the ITTS?

---

**Seminars on theory and methods in social work, internationally comparative, development of soft skills for research and academia**

**Development of contacts with PhD directors**

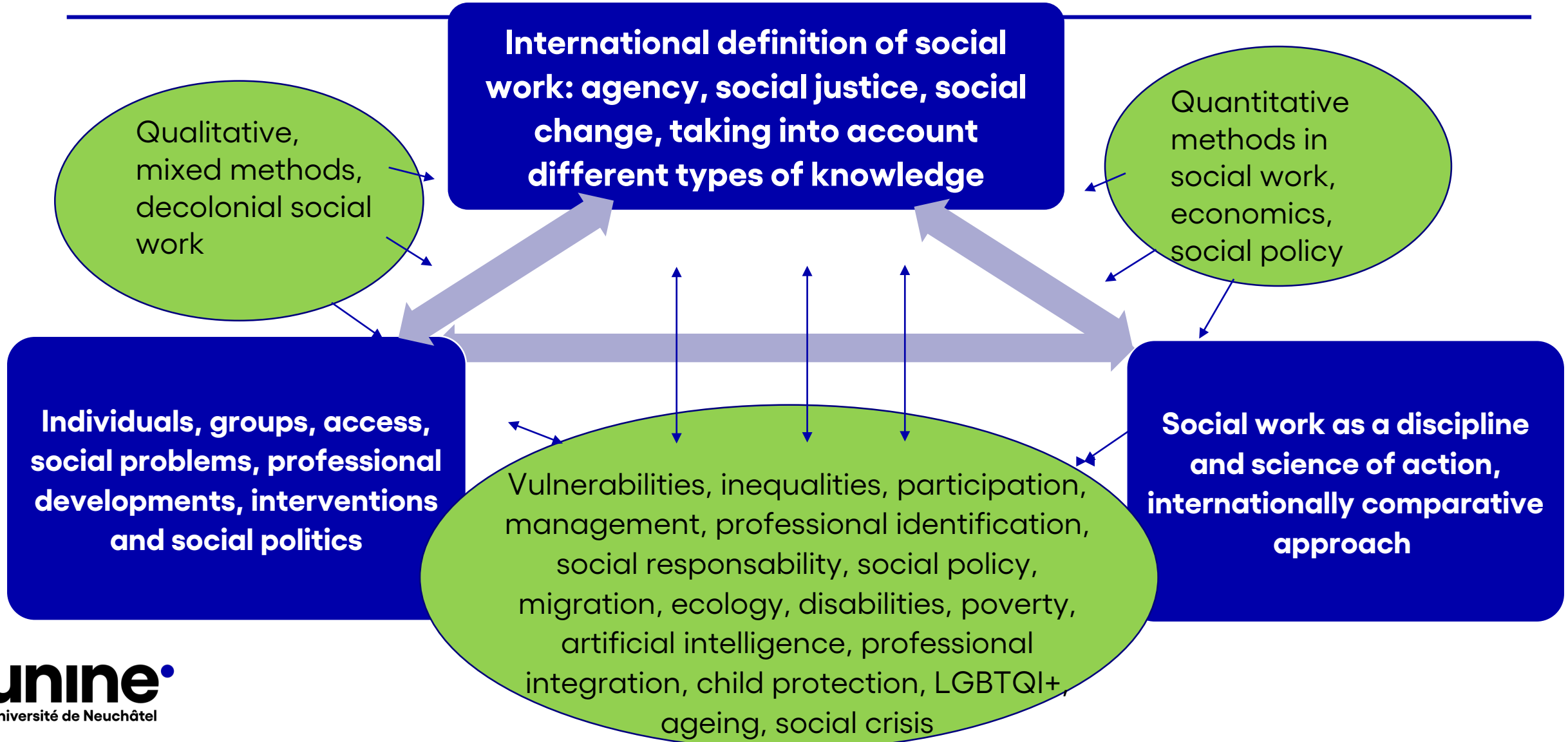
**Interfaculty and transdisciplinary development of the ITTS by co-direction, seminars, conferences, research projects**

**Collaboration with the UAS and the practice fields of social work**

**Installing a multilingual culture (French, German, Italien, English)**


**Consideration of the different topical fields of social work**

# How does ITTS consider the discipline of social work?




# Why do you need a PhD in social work?


Because you are curious and keen to achieve new, systematic, solid, empirical knowledge about a specific question on a social problem



Because you plan to pursue an academic career in the discipline of social work, do high level research with official fundings and teach future social workers at BA, MA and PhD level



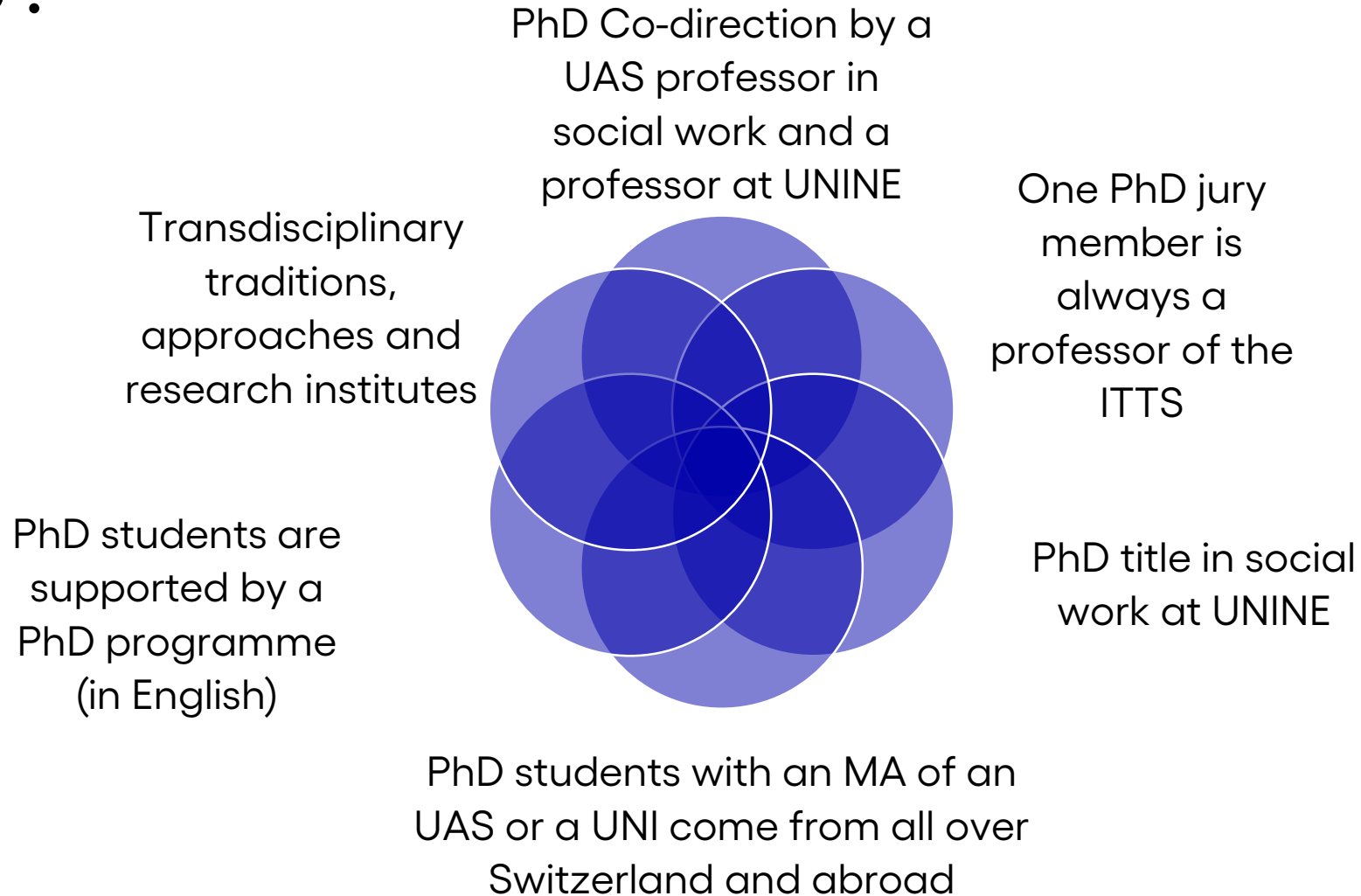
Because you strive for the equal recognition of professional knowledge in the action oriented discipline of social work next to medical doctors, lawyers, psychologists and pedagogues



Because you need to elaborate a theoretically founded, reflective positionality in your professional environment for an officially recognised leadership role in your institutional field of social work




# What is specific about the PhD programme at the ITTS?




# How to find two PhD codirectors?


Prepare an application with a cover letter, (at least a) one-page sketch of the PhD topic and intended research domains, a CV, copy of MA + BA titles, examination results



Send the sketch of your PhD topic to a professor at UNINE and potential codirector, ask for a meeting and/or about the conditions for being accepted (be interested in the fields of expertise of the professor, be (just a little) flexible about your topic)



Discuss this with a professor from your home institution who you would like to choose as one of the two codirectors of your PhD



Send the above application to the administration (F.Manzoni) of the ITTS



Plan a meeting with the director of the ITTS with the scope to find support for the choice of the second PhD director and the individualised PhD programme

# How to plan and to finance a PhD?



**You need time** (at least 2 days a week)  
Your planning goes over 5 years (10 semesters), limit given by the regulations of Faculty of economics and business at UNINE



## **You need to be able to finance this time:**

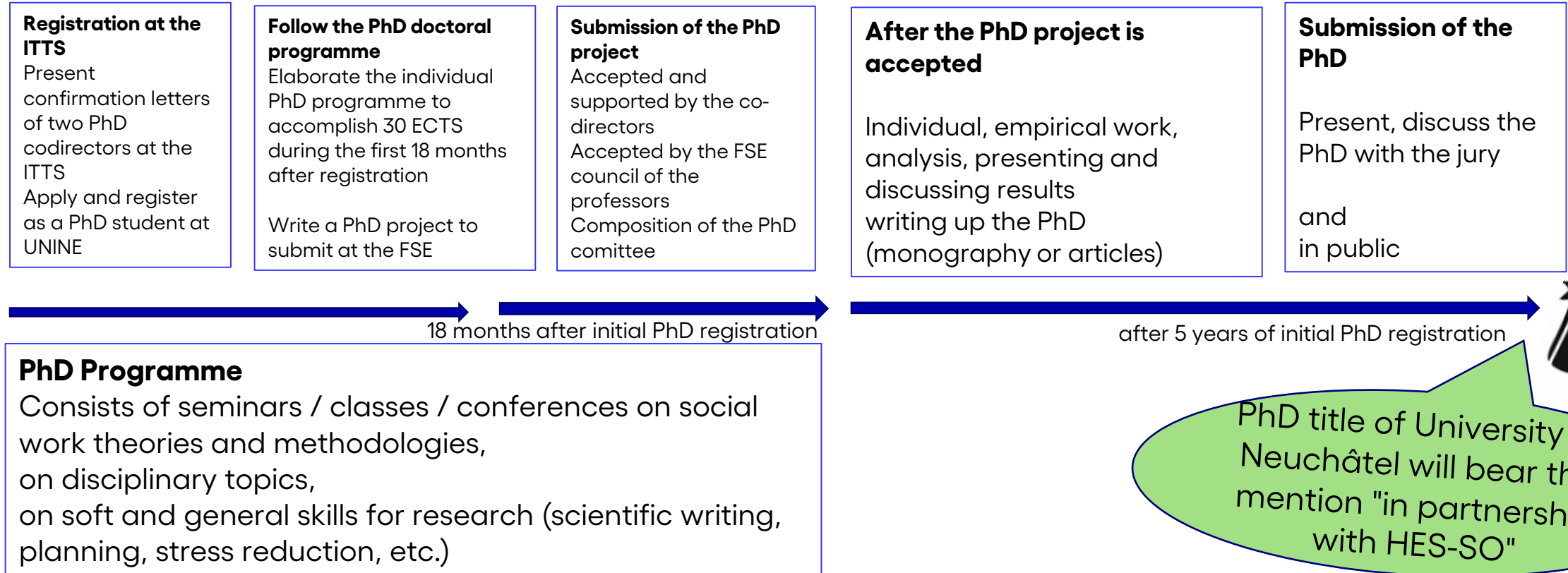
- Participate as an FNS researcher in a project
- Work as a (part-time) teaching and / or research assistant in a UAS of social work or at UNI
- Work part-time in a social institution (max. 60%)
- Apply for grants



<https://www.snf.ch/en/YyNH009fxuDiGk7U/funding/careers/docch>



# How does the process of PhD in Social Work at the ITTS?



Regulation for the PhD at the Faculty  
<https://rsn.ne.ch/DATA/program/books/rsne/pdf/416331.pdf>

Regulation for submission and publication of the PhD  
[https://www.unine.ch/files/live/sites/systemsite/files/juridique/d\\_depottheses.pdf](https://www.unine.ch/files/live/sites/systemsite/files/juridique/d_depottheses.pdf)

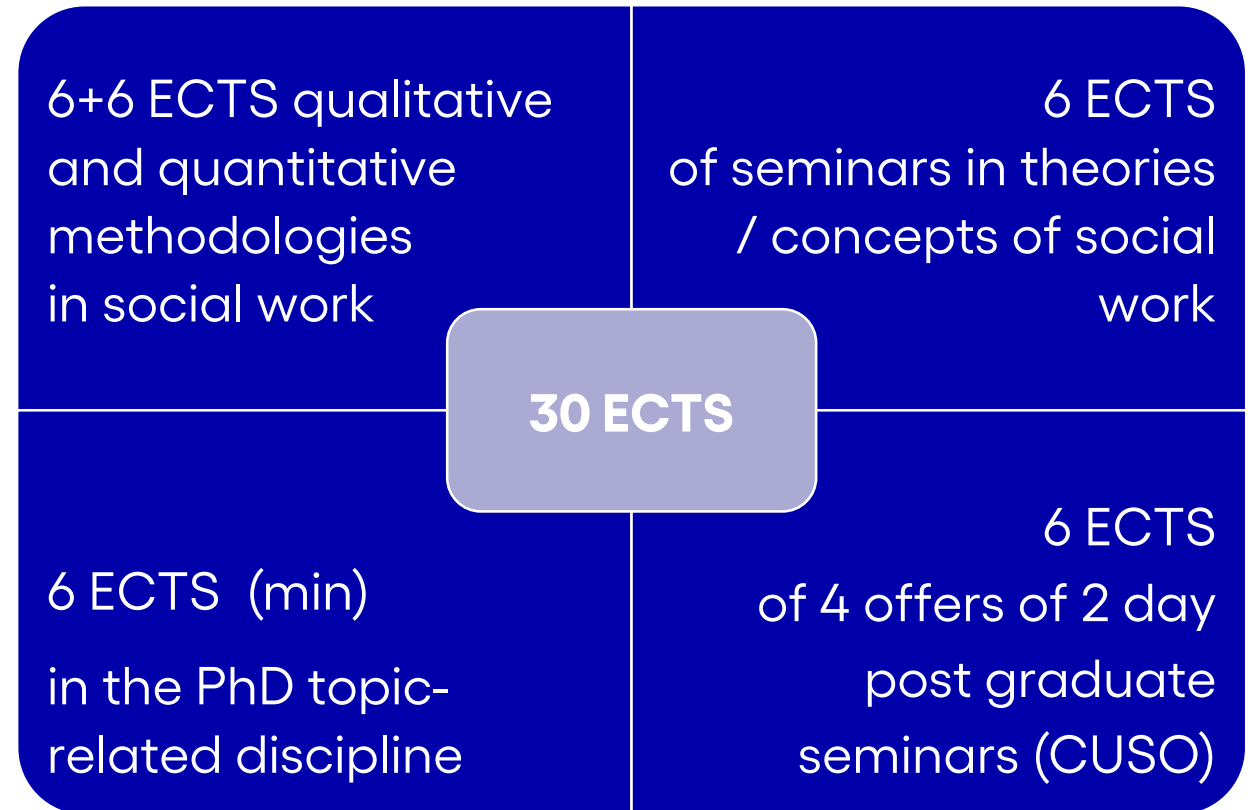
# How is the PhD Programme structured?

**Each PhD-student** must complete **30 ECTS** during the first **18 months**.

The PhD student decides upon its own programme, together with the two co-directors and the direction of the ITTS.

**The individual programme of 30 ECTS is listed in the pedagogical agreement.**

The participation in **international** seminars, conferences are encouraged and the **ITTS / FSE supports** these **participations financially**.



**Registration deadline as PhD student for fall semester 2024 is June 30<sup>th</sup> 2024**

# What about the individual PhD Programme (Pedagogical agreement & PhD charter UniNE)?

Enseignements (liste des cours)	ECTS	Semestre 1	Semestre 2	Semestre 3
<b><i>Théorie en travail social (min. 6 ECTS)</i></b>				
<i>Social work theories:</i>				
<i>epistemologies, classics, and current issues</i>	3	x		
<i>Social work theories: concepts, issues and innovation</i>	3		x	
<b><i>Méthodologies qualitatives en travail social (min. 6 ECTS)</i></b>				
<i>Qualitative and mixed methods</i>				
<i>in social work &amp; social sciences</i>	3		x	
<i>Social work research methods: developing a PhD project</i>	3	x		
<i>Starting a PhD thesis,</i>				
<i>entering the PhD process, scientific writing</i>	1.5			
<i>Research design in social sciences:</i>				
<i>a question of coherence</i>	1.5			
<b><i>Méthodologies quantitatives en travail social (min. 6 ECTS)</i></b>				
<i>Quantitative research methodologies</i>				
<i>in social work &amp; social sciences</i>	6		x	x
<b><i>Cours/sémin. en lien avec la thématique de thèse (min. 6 ECTS)</i></b>				
	6 + 6			
<b>Total (30 ECTS)</b>				
<b>Equivalences (possible)</b>	<b>ECTS</b>			



# What seminars / classes does the ITTS offer?

## Autumn 2024 / 2025

**Social work theories: epistemologies, classics, and current issues**, *Barbara Waldis*, 3 ECTS

dates not known yet



2x Thursday & Friday  
or 4x Fridays

## Spring 2025

**Social work theories: decolonising social work**, *Barbara Waldis*, 3 ECTS



2x Thursday & Friday  
or 4x Fridays

**Social work research methods: developing a PhD project**, *Barbara Waldis*, 3 ECTS



4x Fridays (full days)  
or 8x Fridays (half days)

**Qualitative and mixed methods in social work & social sciences**, *Barbara Waldis*, 3 ECTS



4x Fridays (full days)  
or 8x Fridays (half days)

Professor and dates not known yet



**Quantitative Research Methods for Social Work and Social Sciences A+B**  
(8 days in total; in fall and in spring semester)

# How about other doctoral seminars at the ITTS & elsewhere? 2024/2025

## **Starting a PhD thesis, entering the PhD process, scientific writing**

Barbara Waldis *ITTS*, Isabelle Skakni, *Badoc HES-SO*, Caroline Henchoz, *HETSL*

## **Research design in social sciences: a question of coherence**

Swetha Rao Dhananka, *HETS FR*, Barbara Waldis, *ITTS*

*Other possibilities: CUSO & BENEFRI & programme UNINE*

<https://competences.cuso.ch/en/welcome>

<https://www.unine.ch/mobilite/home/etudiant-e-de-lunine/un-cours-ou-un-pilier-ailleurs/benefri.html>

<http://www10.unine.ch/descriptifs/>



Dates not known yet,  
but Thursdays &  
Fridays

# What are the conditions for registration as a PhD student at the ITTS?

- MA degree from a UAS or an MA degree from a Swiss (or recognised foreign) University, average of 4.75 for the MA and a grade 5 for the Master's thesis
- A PhD in social work at ITTS requires a co-direction by a professor from an UAS (school of social work) and a professor of UniNE, confirmations from both are required for registration
- Interested students organise a meeting with the director of the ITTS before registration
- Signature of the PhD charta of UNINE  
([https://www.unine.ch/files/live/sites/systemsite/files/General/UNINE\\_charte\\_doctorat.pdf](https://www.unine.ch/files/live/sites/systemsite/files/General/UNINE_charte_doctorat.pdf))
- Establishment of an individual PhD programme for the 30 ECTS with codirectors and ITTS



# What is needed for an application as PhD student at UniNE?

- ✓ the [registration request form](#), completed and signed
- ✓ 2 passport-sized photographs (not scanned)
- ✓ a copy of a document which proves the candidate's identity
- ✓ a copy of completed secondary studies diploma
- ✓ a copy of the Bachelor degree diploma
- ✓ a copy of the Master degree diploma (if already obtained)
- ✓ copies of certificates of previous university education
- ✓ a copy of the agreement with the professor acting as thesis director
- ✓ a certificate of exmatriculation from the last university or Swiss high school attended



**Université de Neuchâtel**  
Immatriculations  
Avenue du 1er-Mars 26,  
CH-2000 Neuchâtel

# Thank you for your attention!

## **Barbara Waldis**

Professor of Social Work  
Director of the

Institut transdisciplinaire de travail social

Bureau 2.317  
A.-L. Breguet 2,  
CH-2000 Neuchâtel  
[barbara.waldis@unine.ch](mailto:barbara.waldis@unine.ch)

[ophelie.bidet@unine.ch](mailto:ophelie.bidet@unine.ch)

[marta.marques@unine.ch](mailto:marta.marques@unine.ch)

